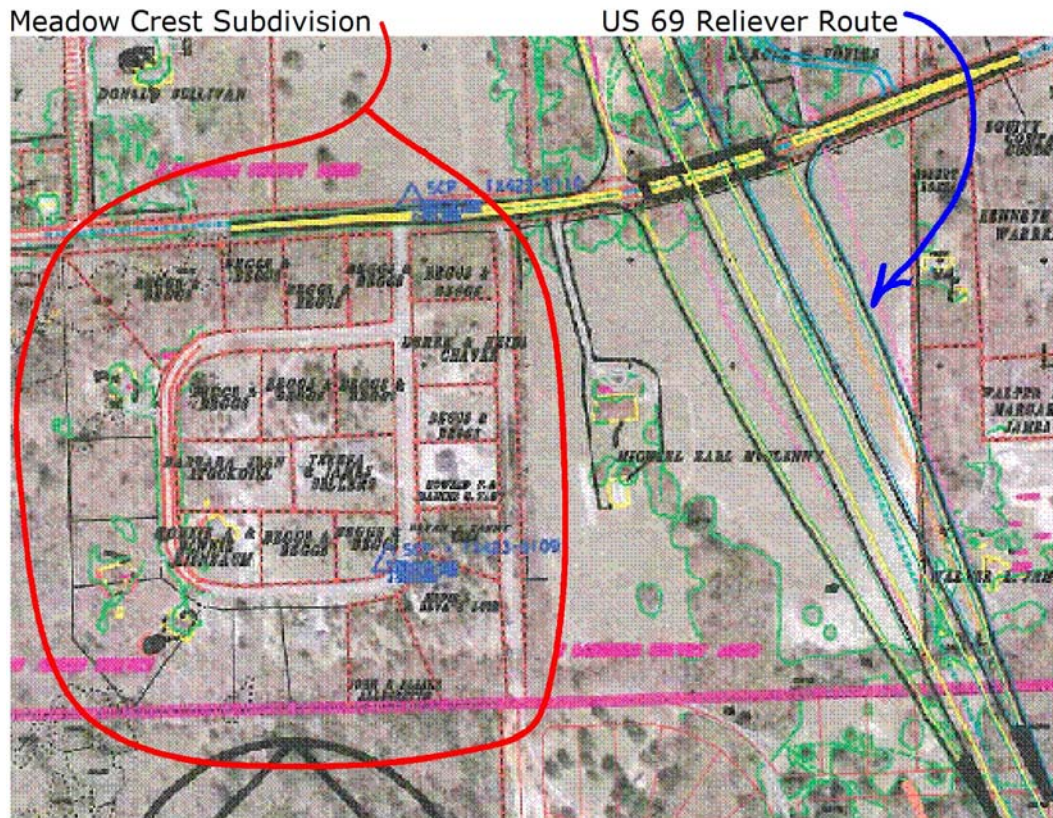


## Meadow Crest Subdivision and US 69 Reliever Route

Some residents and some prospective residents of Meadow Crest Subdivision have expressed concern about the effects of the Texas Department of Transportation (TxDOT) project called the US 69 Reliever Route. This letter is written to briefly describe the current status of the project.



The US 69 Reliever Route is an extension of the outer loop around Tyler (called Loop 49). Loop 49 will intersect I-20 near Lindale. The US 69 Reliever Route will intersect I-20 just north of Loop 49 and connect to US 69 just north of Lindale. The purpose of the Reliever Route is to relieve traffic from US 69 as it passes through Lindale.

Public meetings concerning this project began in 2002 and have occurred periodically since that time. During the planning process, several possible routes for this project have been proposed. The route shown above has been chosen as the preferred route (As of July 2007). As can be seen from this figure, the preferred route will not pass through any lot in Meadow Crest.

This route should benefit Meadow Crest residents, however, by providing the most direct route to I-20 and to Tyler.

For the most current information relating to this project, you can contact TxDOT directly: Ladd Thompson, (903) 569-2349